



Research Paper 69 | 2021

FINANCING ENERGY INNOVATION: INTERNAL FINANCE AND THE DIRECTION OF TECHNICAL CHANGE

Joëlle NOAILLY, Roger SMEETS

Financing energy innovation: Internal finance and the direction of technical change

Joëlle Noailly^{a,b,c*} and Roger Smeets^d

^aCentre for International Environmental Studies (CIES)

Graduate Institute of International and Development Studies, Geneva, Switzerland

^bVU Amsterdam, Amsterdam, The Netherlands

^cTinbergen Institute, The Netherlands

^dRutgers University, Newark (NJ), USA

September 2021

Abstract

Achieving the goals of the Paris Agreement and of climate neutrality by 2050 in the European Union will require mobilizing financial investments towards clean energy innovation. This study examines the role of internal finance (cash flows and cash holdings) and financing constraints for innovation in energy technologies. We construct a dataset for 1,300 European firms combining balance-sheet information and patenting activities in renewable (REN) and fossil-fuel (FF) technologies and estimate the sensitivity of patenting activities to firm's internal finance. We use count estimation techniques and control for a large set of firm-specific characteristics and market developments in REN and FF technologies. We find that patenting activities of firms specialized in REN innovation are significantly more sensitive to a shock in cash flows than firms specializing in FF innovation. Hence, our results emphasize that innovative firms in clean energy may be particularly vulnerable to financing constraints. We discuss the implications of these results for energy transition policies aiming to redirect finance towards clean energy R&D.

Keywords: R&D, financing constraints, renewable energy.

JEL-Classification: O3A; Q4; G3.

*Corresponding author: Joëlle Noailly, joelle.noailly@graduateinstitute.ch, Tel: +41229086222. Address: Center for International Environmental Studies, Graduate Institute of International and Development Studies, Chemin Eugene-Rigot 2, 1211 Geneva, Switzerland. Roger Smeets: rsmeets@business.rutgers.edu, Tel:+1 957 353 1647. Address: 1 Washington Park, Newark, NJ 07102. This work was initiated by the European Investment Bank (EIB) and we thank Philipp Brutscher (Economic Department, EIB) for providing us with the data. We thank participants at the "Workshop on Corporate Finance Alternatives in Europe", European Investment Bank, Luxembourg, a RWI research seminar in Berlin, EAERE Conference in Athens, EEA Conference in Lisbon, WCERE in Gothenburg, and at the First Workshop on Climate Economics, Innovation and Policy at the University of Ottawa for useful comments and suggestions.

1 Introduction

The ability to achieve sizeable greenhouse gases emissions reductions to address climate change without compromising future economic growth is linked to the deployment and development of clean technologies. The energy sector is key in this respect, as emissions from electricity production are responsible for 40% of worldwide carbon emissions (IEA, 2015). Decarbonizing the energy sector implies shifting away from fossil-fuels, such as coal, oil and gas, which today still accounts for 70% of worldwide electricity production and 80% of global energy investments. Despite recent developments in renewable energy, in particular in wind and solar energy, experts worry that the current pace of innovation efforts in renewable technologies may not be sufficient to achieve the commitment of the Paris agreement to limit global temperature rise below 2 degrees Celsius (IEA, 2017). While technological advances are needed to improve further efficiency and reduce plant-level integration costs of renewables, the share of renewable (REN) energy in global corporate energy R&D spending remains below 15% (FS, UNEP and BNEF, 2016) and most innovation efforts still tend to be directed to existing incumbent fossil-fuel (FF) technologies. Mobilizing more finance towards clean energy is thus key for the energy transition as recent climate models estimate that the low-carbon energy investment gap to achieve the 2 degrees target of the Paris Agreement represents about one-quarter of annual total energy investment (McCollum et al., 2018). In Europe, the new European Commission sees technological innovation and R&D in clean energy as important drivers for achieving the objective of climate neutrality by 2050 (European Commission, 2020) and stresses the importance of making finance flows consistent with the low-carbon pathway. According to Polzin and Sanders (2020), Europe still faces a lack of investments to promote R&D in novel clean energy technologies, such as energy storage, energy-efficiency, decentralized renewable energy, or advanced biofuels and they strongly advocate for a need to “move (some of) the trillions to where they are most needed to facilitate the energy transition in Europe” (Polzin and Sanders, 2020 p.2).

Theoretically, several market failures explain why firms tend to underinvest in the development of renewable energy technologies. First, just like other forms of R&D, firms innovating in REN technologies cannot fully appropriate the returns on their innovation – this is the so-called ‘knowledge externality’. Second, in the absence of environmental policy setting a price on carbon emissions, the ‘environmental externality’ implies that firms have sub-optimal incen-

tives to develop further these low-carbon technologies. Third, path-dependency in innovation, a form of intertemporal knowledge externality, leads technical change to be directed towards FF technologies, where most innovation took place historically (Acemoglu et al., 2012; Aghion et al., 2016; Noailly and Smeets, 2015). Finally, an additional market failure that has received less attention in the energy R&D literature is the prevalence of credit constraints to finance R&D. All R&D investments are theoretically susceptible to financing constraints due to intrinsic characteristics of the R&D process (i.e. uncertain outcome of the R&D process, the lack of collateral values and information asymmetries between investors and innovating firms; Hall and Lerner, 2010). An open question, however, is whether financing constraints may be more severe for R&D in REN than in FF technologies, thereby affecting not only the rate but also the direction of innovation. There are several arguments why financing R&D may be more difficult for firms innovating in REN (vs. FF) technologies. First and foremost, the technologies present different characteristics substantiating distinct risk-profiles for investors: REN technologies are younger, less mature, and may require higher irreversible sunk costs than their fossil-fuel counterparts. In addition, due the presence of the environmental externality, renewable technologies are highly dependent on policy support, which tends to fluctuate over time thereby generating additional risks for investors. Finally, firms undertaking REN innovation may be smaller and younger than other firms and may lack the track record to attract financing.

In this paper, we provide novel empirical evidence on the importance of financing sources - and in particular internal finance in the form of cash flows and cash holdings - for innovation in REN and FF technologies. So far, the literature on energy R&D has mainly focused on the role of energy prices, market developments and environmental policies (Popp, 2002; Johnstone et al., 2010), and more recently on path-dependency in renewable innovation (Noailly and Smeets, 2015). By contrast, the role of financial constraints in commanding energy innovation has received little attention in previous research (Howell, 2017). By studying how the availability of internal finance may differentially affect R&D investments in renewable and fossil-fuel energy technologies, our study aims to contribute to a new research agenda on the role of financing constraints on the direction of innovation - so far, the evidence has remained mainly anecdotal and in sectors outside energy.¹ Our study also innovates by explicitly com-

¹Abraham (2011) note for instance that the pharmaceutical industry has become locked into innovation in drugs which are less complex and provide easier returns than other areas of research, such as diagnostics or life-style remedies.

binning the environmental economics literature with the well-developed framework in corporate finance on the role of finance for innovation (Hall and Lerner, 2010; Brown et al., 2012). In line with these studies, our econometric approach estimates the R&D investments' sensitivity to internal financing (e.g. cash flows) for various types of firms. Our analysis relies on a unique dataset combining balance-sheet data with data on firm-level innovation activities (as measured by patents) in renewable and fossil-fuel energy technologies for a sample of 1,300 European firms. Our results suggest that patenting activities of innovating firms specialized in renewable technologies are more sensitive to shocks in cash flows and cash holdings than firms specializing in FF innovation - this result holds over the 1995-2009 period which corresponds to the period of early development of renewable energy technologies. The higher dependence on internal finance for REN firms suggests that these firms may be more vulnerable to financing constraints than FF firms. The significant difference between REN and FF firms remains robust even when looking at specific sub-samples of large and mature firms, which would be expected to be less subject to financing constraints.

Our study is structured as follows. Section 2 reviews previous literature on both corporate finance and environmental economics on the financing of (clean) innovation. Section 3 presents our empirical framework and Section 4 describes the data. Section 5 reports our results and Section 6 concludes and discusses implications for future energy transition policies aiming to address the investment gap in clean energy R&D.

2 Previous literature

There is a large body of theoretical and empirical work focusing on the role of financial factors and liquidity for R&D investment. Firms typically finance their investments by having recourse to both internal (current cash flows and cash holdings) and external finance (debt and stock issues). In the specific case of R&D investments, several factors explain why access to external finance may be particularly difficult (Hall and Lerner, 2010). First, the majority of R&D expenditures concerns wages of R&D workers, rather than capital investment. This implies that banks often cannot claim collaterals in return for R&D investment. First-time innovators will also often lack a valuable asset that can serve as collateral. As a result, the availability of external (debt) finance is either limited or very costly. Second, due to the highly uncertain

nature of the outcome of the innovation process, so is its financial return. The high degree of uncertainty around innovation makes it always difficult to know in advance whether a firm will be successful at innovating or not. As a result, the risk premium charged on external sources of finance is often prohibitively high. Finally, market failures affecting investments also play a role for R&D investment. There exists asymmetric information between the provider of finance and the innovator, since the latter tends to have more information about potential success or failure. As a result, the high-success firms will tend to exit the market as they cannot signal their quality to financiers. Further, moral hazard may induce innovators to spend money on more risky projects than agreed upon ex-ante with the financier. Anticipating such behavior, financiers could limit the availability of external financing, or offer it at higher cost.

Taken together, these problems imply that firms wanting to invest in R&D activities will typically first deplete their internal cash flow and possibly part of their cash stocks before turning to external sources of financing. A corollary of this result is that firms that are financially constrained will tend to be more sensitive to shocks in the supply of internal finance: for these firms, an expansion of cash flow will be positively associated with more R&D. These firms will also be more likely to reduce funds from their cash holdings in order to smooth R&D investment: cash stocks are then used as a ‘buffer’ to avoid firing R&D workers during downturns (Brown et al., 2012). The importance of internal finance for R&D has generated extensive work in the corporate finance literature to test empirically the R&D-cash flow sensitivity. In reduced form estimation, the theoretical prediction is that an increase in cash flows and a decrease in cash holdings should be associated with an increase in R&D investment, especially for firms that are financially constrained. Himmelberg and Petersen (1994) find an economically large and statistically significant relationship between R&D and internal finance in a panel of small firms in high-tech industries, a group of firms particularly likely to face significant internal finance constraints. Mulkey et al. (2001) report a much stronger R&D-cash flow sensitivity for U.S. firms relative to French firms. Brown and Petersen (2009) find significant effects of cash flow on R&D investment for young, but not mature firms, in a panel data of 1,347 U.S. publicly traded firms in high-tech industries over the 1990-2004 period. Brown et al. (2012) find similarly a positive link between R&D and cash flow for a sample of publicly listed companies in Europe, especially in the group of firms most likely to face binding financing constraints (younger,

smaller and low-dividend firms). Loof and Nabavi (2016) relate, as we do, cash flows and cash holdings to innovation as measured by patents for a sample of exporting firms in Sweden over the 1997-2007 period. They estimate a positive relationship between cash flow and patenting activities and a negative association between cash holding growth and innovation for high-tech firms, suggesting that these firms may be particularly financially constrained.

Next to the important role of internal finance, the literature also acknowledges the role of external finance for R&D and in particular equity financing. By contrast to debt financing, equity does not require collateral, and, unlike providers of debt, equity investors share in the upside of the investment. This makes external equity cheaper than external debt. Looking at publicly traded firms, Brown and Petersen (2009), Brown and Petersen (2011) and Brown et al. (2012) all demonstrate the sensitivity of small, young, and technology-intensive firms' R&D not only to internal finance but also to external equity financing constraints.² Taken together, the corporate finance literature sketches a financing hierarchy: first, internal finance is depleted, followed by external equity financing, possibly followed by external debt financing.

So far, there is no evidence in the literature on the cash flow-R&D sensitivity in the context of energy firms. As energy technologies are highly capital-intensive and require large upfront and often irreversible investments, investments in energy exhibit very different risk profiles than investments in other sectors. Within the energy sector, REN and FF technologies also present distinct risk profiles, as investments in renewable energy face specific challenges. First, REN technologies still largely rely on policy support as government intervention is justified in this sector due to the environmental externality. Yet, the risk that policies supporting clean energy are subject to change makes it challenging for investors, who might hold an investment under successive governments. Looking at the determinants of venture capital financing in the renewable energy sector using data on deals in the 'clean tech' industry for 26 countries over the period 2005-2010, Criscuolo and Menon (2015) find that national policies designed with a long-term perspective (e.g. feed-in tariffs) are associated with higher investment levels compared to more short term fiscal policies (e.g. tax incentives, rebates).

Second, REN technologies present higher technological risks than traditional FF ones. Renewables usually require higher upfront capital investments. Nelson and Shrimali (2014) esti-

²The established literature in this field mostly focuses on samples of publicly traded firms. In this context, the typical definition of a small firm is one with less than 500 employees, whereas a young firm is one whose IPO took place less than 15 years ago.

mate that upfront capital costs represent 84-93% of total project costs for wind, solar and hydro energy (compared to 66-69% for coal and 24-37% for gas). More importantly, technologies that are still in an early stage of development exhibit high failure rates. Ghosh and Nanda (2010) and Nanda and Fleming (2015) discuss how entrepreneurs in renewables need risk capital, not only in early stages, but also later on to demonstrate that the technology can work at scale. This is less of a problem for FF technologies that are well-established in the sector. Howell (2017) estimates the impact of being awarded an early-stage research grant by the US Department of Energy on revenues, innovation and survival of small high-tech firms in various sectors related to energy. She finds that firms awarded a grant were more likely to receive subsequent venture capital and to increase their patenting activities and revenues. Her results show evidence of a larger effect for younger firms and for firms in less mature technology areas such as hydropower (wave and tidal), carbon capture and storage, building and lighting efficiency and electric vehicles compared to energy technologies in coal, natural gas, biofuels and recycling technologies, suggesting that immature clean technologies are particularly affected by financing constraints. Our analysis departs from Howell (2017) by focusing on European firms rather than US companies, and by looking at different types of non-public finance. This is important as financial intermediation is not structured in the same way on the US and European markets and policies for REN technologies have been relatively more generous in Europe over the last decades.

Finally, firms active in renewables tend to be relatively small, both in the R&D and deployment stage (Noailly and Smeets, 2015; Donovan, 2015). As a consequence, REN projects are often small (compared to nuclear or gas for instance) and small companies do not have an institutional track record to secure debt financing. Incumbents, by contrast, are large companies often specialized in FF technologies and for which shifting to REN often implies cannibalizing their core business. As a result, energy producing firms and utilities are far from active in acquiring promising clean energy startups, thus limiting the available exit options for REN firms (Ghosh and Nanda, 2010; Gaddy et al., 2016).

Altogether, these factors explain why REN investments may have an unattractive risk/return profile compared to FF investments.³ Our work contributes to investigate empirically the hy-

³The specificities of the REN sector also explain why project financing is so popular, compared to other sources of financing. Project financing is mainly used for the deployment stage (i.e. construction of REN generating facilities, such as solar or wind turbines) and is less suited for R&D investment, which is why we abstract from

pothesis that firms specialized in REN innovation may be more vulnerable to financial constraints than firms specialized in FF innovation.

3 Empirical strategy

We follow the existing literature on financing constraints and innovation (Brown and Petersen, 2009; Brown et al., 2012; Loof and Nabavi, 2016) and estimate the relationship between innovative activities and firms' level and stock of internal finance. We aim to test whether an expansion of cash flows is positively associated with innovation (suggesting a binding financing constraint) for firms innovating in energy technologies. In particular, we want to test whether firms innovating in renewable technologies are more susceptible to the innovation-cash flow sensitivity than firms innovating in fossil-fuel technologies. We measure innovation by patent counts and relate patenting activities to firms' financial sources and other controls for firm's and technology markets characteristics. Since we are interested in estimating the differential effect of firms' internal finance on innovation for REN versus FF firms, we pool both samples of firms and introduce interaction terms between cash variables and a dummy for REN firms. More specifically, we estimate the conditional expectation of patenting activities as follows:

$$\begin{aligned}
E(PAT_{z,it}/X_{z,it}, \nu_i, \omega t) = & \exp(\beta_{z,1}CashFlows_{z,it-1} + \beta_{z,2}\Delta CashHold_{z,it-1} \\
& + \beta_{z,11}CashFlows_{z,it-1} * REN firms \\
& + \beta_{z,22}\Delta CashHold_{z,it-1} * REN firms \\
& + \beta_F REN firms + \beta_{z,3}EXT_{z,it-1} \\
& + \beta_{z,4}STOCKP_{z,it} + \beta_{z,5}X_{z,it} + \nu_i + \omega t + \epsilon_{z,it})
\end{aligned} \tag{1}$$

where subscripts z , i and t denote technology ($z = REN, FF$)⁴, firm and year, respectively; PAT captures (REN or FF) patent counts; $CashFlows$ and $\Delta CashHoldings$ are firm's cash flow and growth in cash holdings respectively; EXT is a vector of financial variables

project financing in this paper. This form of financing provides a fixed-income which relies solely on the ability of the project cash flows to repay the amounts borrowed; it typically involves the creation of a project company (Special Purpose Vehicle) which is the legal owner of the project assets and which has contractual agreements with a number of other parties that include off takers, operators, suppliers, insurers and so on. About 30% of the total new investment deployed into large scale REN projects over the 2003-2013 period was financed by project finance debt.

⁴We do not have enough observations to provide a more refined analysis per specific REN - e.g. solar, wind, etc - or FF technology type.

relating to firms' sources of external finance (namely long-term debt Dbt_{t-1} and stock issues Stk_{t-1}); $STOCKP$ is the cumulative stock of patents in technology z filed by the firm, reflecting spillovers from past innovation; X is a vector of control variables capturing firm's characteristics (firms' ratio of sales to total assets, firm's age and number of employees) and other factors affecting the market for REN and FF technologies (fossil-fuel prices and installed capacity); ν and ω capture unobserved firm, and time heterogeneity, respectively; and ϵ is an IID error term. All control variables are lagged by one period (except age and number of employees) to allow for some delay in patenting activities.

The theoretical prediction is that financially constrained firms should exhibit a positive coefficient on cash flows - reflecting the positive innovation-cash flow sensitivity - and a negative coefficient on cash holdings growth, as a reduction in cash holdings releases cash for innovation activities (Brown et al., 2012). Hence, a positive coefficient on the total effect of cash flows interacted with REN firms indicates that a positive shock on cash flows is positively associated with innovation of REN firms, and this coefficient is significantly different from the effect on FF firms. Note that in nonlinear count models, interaction effects will not be equal to $\beta_{z,11}$ and $\beta_{z,22}$ as in linear models. This is because in nonlinear models the marginal effect is not constant over its entire range. As a result, a simple Wald test will not inform about statistical significance and the signs of the interaction terms do not necessarily indicate the direction of the interaction effect (see Appendix).⁵ To calculate total interaction effects, we follow Ai and Norton (2003) and apply the Delta method for variance estimation to compute standard errors for the interaction terms.

While equation (1) allows us to estimate our hypothesis of significant difference across REN and FF firms, we also estimate separate estimations on each specific subsample of firms as this allows us to better illustrate the specific effects of our control variables on each type of firms:

$$E(PAT_{z,it}/X_{z,it}, \nu_i, \omega_t) = \exp(\beta_{z,1}CashFlows_{z,it-1} + \beta_{z,2}\Delta CashHoldings_{z,it-1} + \beta_{z,3}EXT_{z,it-1} + \beta_{z,4}STOCKP_{z,it} + \beta_{z,5}X_{z,it} + \nu_i + \omega_t + \epsilon_{z,it}) \quad (2)$$

We estimate equations (1) and (2) by negative binomial models, which do not impose equidis-

⁵A significant interaction effect is possible even when $\beta_{z,11} = 0$.

persion (i.e. the equivalence of the conditional mean and variance).⁶ Estimating the relationship between financial sources and patenting potentially suffers from a number of econometric challenges. First, there may be omitted variables at the firm-level which could be correlated with both cash flows and patenting. Cash-rich firms may for instance be more likely to patent as this is a costly process. Some firms, e.g. with better managerial abilities, may be both more able to attract funding and to patent than others. All these factors could imply that financial variables are correlated with the error term of the regression and yield inconsistent estimates. We address this issue first by introducing firms' fixed effects ν_i into the count data model. Since equations (1) and (2) are dynamic models in which innovation is determined by past realisations of patenting activities due to the inclusion of the cumulative patent stock on the right-hand-side, the assumption of strict exogeneity is violated and we cannot rely on the conditional fixed-effect Poisson estimator as in Hausman et al. (1984). Instead, we introduce firms' fixed effects ν_i using the 'presample estimator' introduced by Blundell et al. (2002), which is used as an initial condition to proxy for unobserved heterogeneity. More specifically, we compute the firm's cumulative patent stock in all technologies (i.e. not only REN and FF) over the presample period (1978-1994) and introduce it as ν_i in equation (1) in order to capture individual firms' propensity to patent (Blundell et al., 2002; Aghion et al., 2016; Noailly and Smeets, 2015). To control for additional time-varying firms' heterogeneity, we include controls for firms' characteristics, namely firm's age, sales and number of employees. These variables control for instance for the fact that as firms grow older and larger they may both increase their levels of internal finance and become more successful at patenting. In addition, these variables control for investment opportunities - e.g. sales, firms' age, etc - as the level of cash flows may reflect the value of future growth opportunities, such as a greater demand for the firms' product, rather than about financial constraints (Alti, 2003; Erickson and Whited, 2000). We also include a full set of time dummies ω_t to control for time-dependent factors common to all firms, such as business cycles which affect both financing and innovation.

Second, we may be concerned by the fact that cash variables may be potentially endogenous to innovation activities due to reverse causality. Previous literature shows for instance that startups use patents as a signal to investors (Conti et al., 2013). In our case, this is likely less of an issue since our sample is composed of established firms, rather than startups. Yet, to

⁶In robustness analysis, we will also consider the Poisson model.

address this potential source of endogeneity, we use a control function approach to instrument internal finance. As finding an exogenous instrument for financing sources (i.e. correlated with firm's finance but not with innovation) is notoriously difficult, we follow the corporate finance literature and use lagged financial variables dated over $t - 3$ and $t - 4$ as instrumental variables (Brown et al., 2012).⁷

For non-linear count models such as Poisson and negative binomial, the control function estimation is more efficient and consistent than the standard instrumental variables model, since the two-stage interpretation of linear two-stage least squares does not carry over to non-linear models (Cameron and Trivedi, 2013; Wooldridge, 2015). The control function approach operates by estimating CF_{t-1} - our potentially endogenous variables of interest - as a function of our instrument and other exogenous variables, and then inserting the predicted errors from this first stage into the second stage as a separate control variable. A simple test of the statistical significance of the coefficient on the predicted residuals will inform us whether our CF_{t-1} is indeed endogenous, a procedure equivalent to a Durbin-Hu-Hausman exogeneity test Wooldridge (2015). Another major advantage of the control function approach is that it makes it much easier to handle interaction terms that involve endogenous regressors. In our case, if we want to control for the endogeneity of both CF_{t-1} and the interaction term ($CF_{t-1} * REN$ firms), it is sufficient to only estimate the first-stage regression and add the fitted residuals in the second stage equation (Wooldridge, 2015, p.428; Papiés et al., 2017). Finally, the control function approach requires bootstrapping of standard errors.

4 Data

4.1 Measuring innovation

We measure innovation in REN and FF technologies using patent data, following the literature on low-carbon innovation (Popp, 2002; Johnstone et al., 2010). There are several advantages and limitations to working with patent data, which have been discussed at length in the literature.⁸

⁷Due to the limited degrees of freedom, we cannot perform any non-linear instrumental variable estimation via GMM.

⁸A main caveat of working with patents is that not all inventions are patented, as for strategic reasons firms may prefer not to disclose valuable information. The value of patents is also very heterogeneous: only a few patents will lead to successful commercial applications. Despite these limitations, the link between patents and inventions has been clearly established in the literature (Griliches, 1990) as patents are correlated with other indicators of innovative activity, such as R&D expenditures or new product introductions. For our purpose, the

We extract patents from the Orbis dataset provided by Bureau van Dijk and linked to the European Patent Office’s (EPO) PATSTAT dataset.⁹ The main advantage of using the Orbis-PATSTAT dataset to extract relevant patents is that it provides us with a unique firm’s identifier that allows us to match firm-level patents to firms’ balance sheet and income statement data.

We extract data on firms’ patenting activities in REN and FF technologies using International Patent Classification (IPC) codes to select patents in REN and FF technologies. REN patents include patents in wind, solar, hydro, marine, biomass, geothermal and waste energy technologies (Johnstone et al., 2010), while FF patents include patents related to production of fuel gases by carbureting air, steam engine plants, gas turbine plants, hot-gas or combustion-product positive displacement engine, steam generation, combustion apparatus, furnaces and improved compressed-ignition engines (Lanzi et al., 2011). We also extract firms’ patents in all technologies (not only REN or FF) to be able to correct for firms’ propensity to patent.

Just as in Noailly and Smeets (2015), we focus on firms that have been granted at least one REN or FF patent at the EPO and 17 national patent offices (EU-15, Switzerland and Norway). We count the number of granted patents per firm per year over the 1995-2009 period¹⁰, including only first priority patents and excluding equivalent patent filings.¹¹ The fact that we focus on granted patents of firms’ registered in Orbis implies that our sample is not likely to include the lowest quality patents.¹² We use the application year of priority patents, as this is closer to the year of the inventive idea than the year in which the patent was granted. We compute the annual count of REN and FF patents per firm as well as firm-specific REN and/or FF knowledge stocks, which are the cumulated number of patent counts over the period.¹³

main advantage of patent data is that they are highly disaggregated and are available at the firm and technology level.

⁹We thank the European Investment Bank for providing us with the dataset.

¹⁰Note that our data range stops in 2009 before the financial crisis. In this way, we avoid the complexity of studying the financing of energy technologies in the aftermath of the crisis, characterized by specific Green New Deal policies difficult to account for. Such analysis will deserve a study on its own in future work.

¹¹For patent families with multiple priorities, we only keep the patent with the earliest priority date.

¹²In addition, we restrict our analysis to firms that could be linked to the Orbis dataset, therefore excluding patents from individuals, which may be of lower value.

¹³Knowledge stocks are calculated using the perpetual inventory method, assuming an annual depreciation rate of 15%.

4.2 Sources of finance

Using the financial database of Orbis, we have access to data on firms' (consolidated) balance sheets and income statements. We conduct a series of consistency checks as in Kalemli-Ozcan et al. (2015) recommended when working with financial variables in Orbis (see Appendix) and we trim the 1% tails of all regression variables to remove outliers. We are left with a sample of 1,300 firms over the 1995-2009 period for which we can exploit balance sheets data. We consider the following indicators of financing sources:

- *Cash flow*: computed as total cash flow (including depreciation), divided by the end-of-last-period stock of total assets.
- *Cash holdings growth*: change in firm-level stocks of cash (cash holdings and cash equivalents). This variable aims to capture so-called 'R&D smoothing' (Brown and Petersen, 2011).
- *Long-term debt*: computed as the annual change in total long-term debt, divided by the end-of-last-period stock of total assets.
- *Stock issues*: computed as the annual change in outstanding issued share capital, divided by the end-of-last-period stock of total assets.

All variables are measured in 100,000 USD, using the exchange rate data from the International Energy Agency to convert the financial variables into US dollars.

4.3 Other firm-level variables

We further extract a number of firm-level control variables from the financial database of Orbis and include (net) sales¹⁴, the number of employees and the age of the firm.

In addition, we add variables that aim to capture changes in the macro-economic environment of the firm in particular with respect to the market and policy environment affecting REN and FF technologies in Europe over the last decades. These variables are included as additional controls in our regressions.¹⁵ Table 6 in the Appendix provides specific definitions of all these variables and their data sources.

¹⁴Sales are computed as the ratio of net sales to end-of-last period total assets.

¹⁵As our focus is on interpreting the impact of financial variables, we refer to Noailly and Smeets (2015) for a more extensive discussion of how these other control variables affect REN and FF innovation.

Energy prices: we extract data from the Energy Prices and Taxes database of the International Energy Agency on country-level prices of the different fossil-fuel energy sources, namely: oil, gas and coal.¹⁶ To make FF prices firm-specific, we weight FF prices according to the firm’s distribution of patent filings across countries using information on patent families as in Noailly and Smeets (2015) and Aghion et al. (2016). Since energy prices include taxes, this variable can proxy for carbon pricing policies.

Market size: we extract data from the Energy Statistics database from the IEA on electricity output from REN and FF sources per country in total number of gigawatt hours generated by power plants. For FF energy, we use data on electricity output in oil, gas and coal, while for REN energy we have access to disaggregated data on electricity output from solar, wind, hydro, marine, geothermal, biomass and waste energy. Market size variables also capture demand-pull policies, such as feed-in tariffs, put in place in specific countries. We compute firm-specific market size by using designation country weights as well as technology weights in each firm’s patent portfolio (see Appendix). Market size variables are likely to capture demand-pull policies (e.g. guaranteed tariffs, investment and production tax credits) that aim to increase the market for renewables.

4.4 Descriptive statistics

We extract patents from two types of firms: (1) firms that specialize solely in REN innovation (REN firms), (2) firms that specialize solely in FF innovation (FF firms) over the 1995-2009 period.¹⁷ This provides a sample of 1,287 firms with a majority of FF firms (68%). Including all controls, our sample of firms reduces to 1,203 firms composed of 390 REN firms and 813 FF firms. Our sample of patents consists of 1,606 patents, among which about one third are from firms innovating in REN technologies. Figure 1 plots the evolution of FF and REN patents over the period 1995-2009.

¹⁶These are prices paid at the power plant for electricity generation, i.e. prices paid by electricity facilities for a certain type of fuel (including taxes).

¹⁷We exclude ‘mixed’ firms that are active in both technological fields, REN and FF, from the analysis. These very large firms (mostly active in FF technologies) differ considerably from our set of specialized firms and their financing sources and structure cannot be compared with the ones of small specialized firms. Table 7 in Appendix shows that these firms are on average 5 times larger in terms of number of employees and total assets and patent 10 times more than specialized firms. See also Noailly and Smeets (2015) for a more in-depth discussion of the difference between mixed and specialized firms. Although mixed firms would certainly deserve an analysis on their own, the sample size - 90 mixed firms over the 1995-2009 - is too limited to provide reliable estimates.

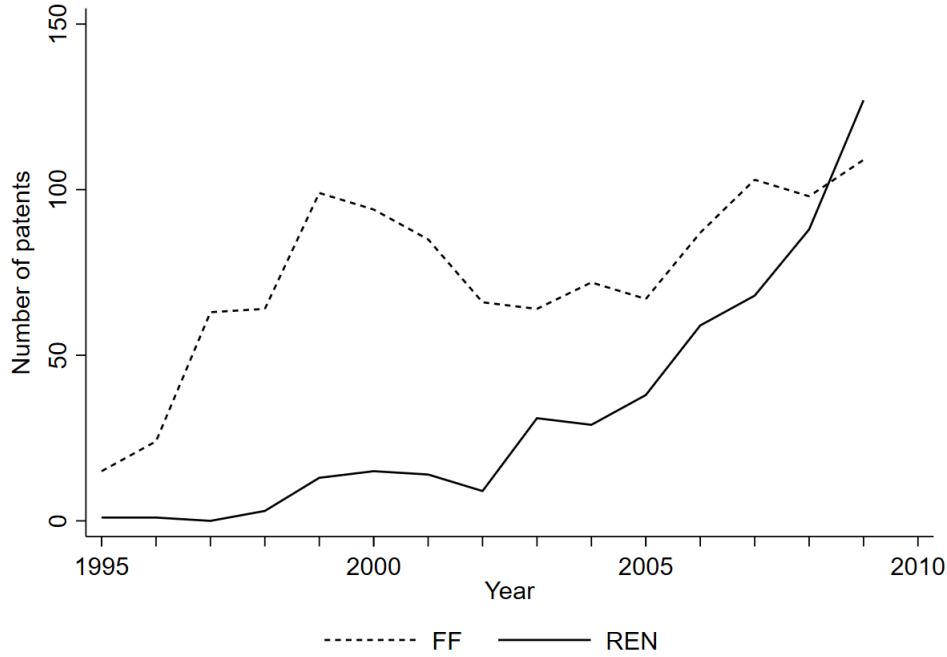


Figure 1: Number of REN and FF patents, 1995-2009

Table 1 presents the summary statistics of financial variables for the different types of firms. For firms specialized in REN innovation, the firm’s median flow of cash, cash holdings, flow of total debt and new stock issues, all scaled by beginning-of-period total assets, are of 0.093, 0.050, 0 and 0.001, respectively. For all firms, median cash flow and cash holdings ratios are always much larger than other financing sources, underlying the critical role of internal finance in our sample of innovative firms. This is not surprising given evidence from previous literature¹⁸ and given that we do not consider publicly listed firms.¹⁹ Median values of debt and stock issues are always close to zero, so a typical firm in our sample obtains very little external finance. Regarding other firms’ characteristics, we can see in Table 1 that on average REN firms tend to be about 5-6 years younger, have a smaller number of employees than FF firms, and file slightly less patents (all technologies included) per year.

¹⁸Brown et al (2009) find that young firms have average cash holdings ratios that are twice as large as the cash holdings for mature firms, reflecting the fact that buffer stocks of liquidity are more important for firms more likely to face financial constraints.

¹⁹Mean debt and stock issues to assets ratios for specialized REN and FF firms are 10 to 20% of mean cash ratios, and this is mainly explained by outlier firms as the median debt and stock issues ratios remain very low.

Table 1: Summary Statistics

	REN firms					
	Mean	SD	50 th perc.	75 th perc.	Min	Max
CF _{t-1}	0.121 ^a	0.236	0.093	0.152	-0.931	6.908
CashHolding _{t-1}	0.131 ^a	0.388	0.050	0.153	0.000	14.9
Dbt _{t-1}	0.025	0.330	0.000	0.026	-0.981	12.167
Stk _{t-1}	0.018	0.078	0.001	0.009	0.000	1.686
Sales _t	1.679 ^a	1.784	1.327	2.015	0.000	42.464
Total Assets _t	5,474 ^a	24,042	362	1,676	11.2	389,237
Age _t	31 ^a	32	21	37	0	191
Employees _t	1,979 ^a	11,606	165	610	0	319,998
REN patents _t	0.249	1.105	0	0	0	19
All patents _t	3.858 ^a	15.013	0	1.5	0	197.5
	FF firms					
	Mean	SD	50 th perc.	75 th perc.	Min	Max
CF _{t-1}	0.098	0.176	0.083	0.134	-1.245	8.780
CashHolding _{t-1}	0.105	0.184	0.043	0.128	0.000	4.45
Dbt _{t-1}	0.012	0.350	0.000	0.010	-0.866	22.610
Stk _{t-1}	0.014	0.180	0.001	0.007	0.000	11.759
Sales _t	1.444	1.016	1.296	1.808	0.000	27.327
Total Assets _t	8,677	27,565	579	3,471	11.1	376,038
Age _t	37	37	26	48	0	432
Employees _t	2,978	9,842	263	1,278	0	115,000
FF patents _t	0.231	0.802	0	0	0	18
All patents _t	5.628	34.885	0	2	0	1,028

Average over firm-year observations, 1995-2009: Number of observations: REN firms (N=1,995 firms), FF firms N=4,811 firms) ^a indicates significant difference (below 5%) with FF firms. All balance sheets data (except age and number of employees) are scaled by beginning of the year ratios to total assets.

5 Results

In Table 2, we present the baseline results of estimating equation (1) by negative binomial models for the pooled sample of REN and FF firms. The dependent variable in every column is the number of patents (either REN or FF) per firm i and year t . Column (1) includes only internal finance variables and firms' characteristics, column (2) adds the full set of technology market controls and column (3) adds external finance variables. Our preferred specification is provided in column (3) with all controls. All models include full sets of year dummies and firms' fixed effects captured by the presample patent stock. In all regressions, the presample variable capturing firms' fixed effects and heterogeneity has a significant negative coefficient. Note that we do not have a priori expectations on the sign of this coefficient, but the fact that we do find statistically significant coefficients in most models suggests that the presample variable does capture part of the unobserved firm heterogeneity.

As discussed in Section 3, we look at how internal finance relates to patenting activities for REN and FF firms by including interaction terms between cash flows and cash holdings growth and a dummy for specialized REN firms, respectively. In this way, we can compare the coefficients of internal finance variables across both types of firms to determine whether the effect on REN firms is significantly different from the effect on FF firms. Since we conduct nonlinear estimation, we cannot directly interpret the coefficient - nor the sign - of the interacted variables. Instead, we compute total interaction effects using the Delta method (Ai and Norton, 2003) and report them at the bottom of Table 2 (see Appendix for computation details). Across all specifications in columns (1) to (3), we find that the interaction term ($CF_{t-1} * \text{REN firms}$) is significant and positive, while the interaction term ($\Delta\text{Cashholdings}_{t-1} \times \text{REN firms}$) is never significant. The positive association between cash flows and innovation for REN firms provides support to the hypothesis that the innovation-cash flow sensitivity is significantly higher for REN firms than for FF firms, suggesting that REN firms are more financially constrained than FF firms. The total interaction effect on ($CF_{t-1} * \text{REN firms}$) increases in column (3) when we include controls for all potential other sources of finance, namely external financing via long-term debt and stock issues. The fact that we never find a statistically significant coefficient for the interaction term with cash holding growth suggests that there is no significant difference between REN and FF firms in terms of R&D smoothing. Regarding external sources of finance,

we find no evidence in column (3) for a significant association between long-term debt and stock issues and patenting activities, respectively. This is not very surprising given that we showed in Section 4 that firms in our sample receive very little external finance.

In column (4) of Table 2, we report the results of our instrumental variable estimation using a control function approach. We follow Brown et al. (2012) and instrument CF_{t-1} by using lagged cash flow averaged over $t-3$ to $t-4$, although results are robust to using lags over $t-2$ and $t-3$.²⁰ For cash holding growth, however, lagged values never appear to be correlated with $\Delta\text{Cashholdings}_{t-1}$ in first stage estimations (see columns (3) to (4) in Table 5 in Appendix). Since we cannot find any suitable instrument for cash holding growth, we focus on instrumenting CF_{t-1} , as this is also the only variable for which we find evidence of a significant association with innovation in columns (1)-(3) of Table 2.

In the bottom panel of column (4), we see that the estimated interacted coefficient between cash flow and REN firms remains positive and statistically significant. The fact that the first stage residuals are not significant in column (4) indicate that we cannot reject the null hypothesis of exogeneity and thereby provides reassurance that our estimation results in column (3) are not being influenced by endogeneity (Wooldridge, 2015; Cameron and Trivedi, 2013, Chapter 10). Likely, our large set of firms' controls and fixed effects already capture much of firms' heterogeneity.²¹ Column (5) shows that the results are robust to using lagged cash flow averaged over $t-2$ to $t-3$ as an instrument for CF_{t-1} . Again, first-stage residuals are not significant and we cannot reject exogeneity.

Looking at other control variables in Table 2, we find that firms' age is significantly negatively associated with patenting activities, while firms' size in terms of number of employees is positively associated with innovation. By contrast, we find no significant association between the sales ratio and patenting activities. There is evidence for path-dependency in innovation at the firm level, as a larger stock of past REN and FF patents respectively is positively associated with higher patenting activities. Fossil fuel prices tend on average to be negatively associated with patenting activities of all firms. The market size of REN technologies is positively associated with firm-level innovation, but there is no significant association between FF market size and firm-level patents.

²⁰Using further lags ($t-5$ and $t-6$) would significantly affect our number of observations.

²¹Table 5 in Appendix reports the full first stage results.

Table 2: Pooled estimations with interaction terms

Specialized firms	(1)	(2)	(3)	(4)	(5)
				Control Function ($t-3, t-4$)	Control Function ($t-2, t-3$)
CF_{t-1}	0.089 (0.165)	0.090 (0.163)	-0.018 (0.179)	0.566 (0.702)	0.048 (0.567)
CF_{t-1} x REN firms	0.779* (0.413)	0.759* (0.426)	0.979** (0.453)	0.971* (0.583)	1.239*** (0.438)
$\Delta Cashholdings_{t-1}$	-0.118 (0.252)	-0.073 (0.257)	-0.136 (0.268)	-0.417 (0.359)	-0.232 (0.317)
$\Delta Cashholdings_{t-1}$ x REN firms	-0.145 (0.319)	-0.162 (0.322)	-0.235 (0.306)	0.008 (0.557)	-0.112 (0.454)
RENfirms	0.203** (0.096)	0.499*** (0.137)	0.520*** (0.144)	0.436*** (0.149)	0.494*** (0.140)
Dbt_{t-1}			-0.325 (0.204)	-0.527* (0.281)	-0.434* (0.242)
Stk_{t-1}			-0.183 (0.547)	-1.005 (1.483)	-0.913 (1.009)
$\text{Log}(\text{Age})_t$	-0.217*** (0.049)	-0.207*** (0.046)	-0.192*** (0.048)	-0.200*** (0.058)	-0.196*** (0.048)
$\text{Log}(\text{Employees})_t$	0.092*** (0.017)	0.081*** (0.018)	0.089*** (0.019)	0.080*** (0.021)	0.090*** (0.018)
Sales_{t-1}	0.039 (0.030)	0.027 (0.030)	0.038 (0.033)	0.035 (0.040)	0.033 (0.037)
$\text{Log}(\text{KS})_{t-1}$	0.866*** (0.064)	0.849*** (0.062)	0.868*** (0.062)	0.853*** (0.081)	0.867*** (0.073)
$\text{Log}(\text{FF prices})_{t-1}$		-1.356*** (0.512)	-1.390*** (0.539)	-1.328** (0.654)	-1.303** (0.560)
$\text{Log}(\text{REN market size})_{t-1}$		0.388*** (0.126)	0.437*** (0.133)	0.374** (0.152)	0.452*** (0.144)
$\text{Log}(\text{FF market size})_{t-1}$		-0.061 (0.240)	-0.106 (0.234)	0.163 (0.293)	-0.113 (0.262)
presample	-0.169*** (0.040)	-0.132** (0.058)	-0.128** (0.059)	-0.182 (0.120)	-0.125 (0.099)
Constant	-1.919*** (0.383)	-0.381 (1.041)	-0.444 (1.075)	-0.713 (1.299)	-0.582 (1.225)
First-stage residuals				-0.587 (0.687)	-0.018 (0.656)
Total interaction terms (Delta method)					
CF * REN firms	0.266** (-0.162)	0.283** (0.174)	0.550** (0.350)	0.336*** (0.098)	0.340*** (0.108)
CashHoldings * REN firms	-0.041 (0.069)	-0.053 (0.066)	-0.091 (0.067)	-0.040 (0.122)	-0.053 (0.093)
Observations	7,412	7,199	6,806	5,866	6,726
Log Likelihood	-3802	-3714	-3491	-2941	-3422
Number of firms	1287	1260	1203	1083	1179

* $p < 0.1$, ** $p < 0.05$, *** $p < 0.01$. The dependent variable in every column is the number of patents per firm i and year t for the sample of specialized firms (REN and FF firms). Robust standard errors are clustered at the firm level. In columns (4) and (5), the models are estimated using the control function approach with bootstrap standard errors with 150 iterations. First-stage estimations are provided in Table 5, columns (1) and (2) respectively. All specifications include year fixed effects.

In Table 3, we estimate equation (2) for each separate group of firms to better identify separate effects on REN and FF firms.²² The significant coefficients on internal finance variables for the subset of REN firms confirm previously found results: there is evidence of a positive association between cash flow and patenting activities for REN firms. Changes in cash holdings are negatively associated with patenting activities for REN firms in columns (1)-(3), although the coefficient is only statistically significant in column (3) when we include the full set of controls. Looking at columns (4)-(6) in specifications for the sample of firms that specialize in FF innovation, we find no evidence of a positive association between cash flow or changes in cash holdings and patenting activities. The coefficient for cash holdings is only negative in column (6) when we include the full set of controls, although insignificant. Here, the negative association between cash holding growth and patenting activities in column (3) suggests that REN firms may be using cash stocks as a buffer to smooth R&D over time. However, we saw in Table 2 that the coefficient on cash holding growth is not significantly different from the coefficient for FF firms. As before, external finance (long-term debt and stock issues) does not appear to be associated with patenting activities of specialized firms in columns (3) and (6). The only exception is a negative association between long-term debt and patents for FF firms in column (6). A possible interpretation for this result is that other investments – such as physical capital investment – financed by long-term debt may crowd out innovation investments for these firms, but these results should be taken with caution given the low level of external finance in our sample of firms. Finally, the results in Table 3 show that REN market size - a proxy for REN market subsidies over the period - is positively associated with patenting activities on REN firms as expected. Fossil fuel prices - capturing energy taxation - are negatively associated with patenting activities by FF firms.²³

In Table 4, we add further robustness tests to estimating equation (1). In columns (1) and (2), we consider the specific subsamples of mature and large firms as we may be worried that in Table 2 the differential impact of internal finance on innovation may be driven by the fact that FF firms are different from REN firms in terms of age and size as established in Table

²²Given our relatively small number of firms, we cannot estimate the model on more disaggregate subgroups of firms (e.g. solar or wind firms).

²³Note that we do not have a priori expectations on the coefficient for FF prices, as higher FF prices might encourage firms to innovate more in FF technologies (to develop more efficient and cheaper technologies) but could also encourage firms to develop alternative technologies such as REN technologies and thereby discourage FF innovation.

Table 3: Estimations on REN and FF firms subsamples

	(1)	(2)	(3)	(4)	(5)	(6)
	REN firms	REN firms	REN firms	FF firms	FF firms	FF firms
CF_{t-1}	0.936* (0.505)	0.983* (0.544)	1.102** (0.542)	0.167 (0.174)	0.170 (0.174)	0.085 (0.164)
$\Delta\text{Cashholdings}_{t-1}$	-0.326 (0.232)	-0.309 (0.228)	-0.448** (0.209)	0.052 (0.249)	0.066 (0.257)	-0.001 (0.266)
Dbt_{t-1}			-0.142 (0.164)			-0.737** (0.286)
Stk_{t-1}			-0.784 (1.198)			0.053 (0.552)
Sales_{t-1}	0.059 (0.037)	0.044 (0.040)	0.051 (0.041)	-0.048 (0.047)	-0.050 (0.047)	-0.056 (0.054)
Log(Age)_t	-0.346*** (0.086)	-0.353*** (0.085)	-0.315*** (0.089)	-0.163*** (0.053)	-0.165*** (0.053)	-0.158*** (0.053)
Log(Employees)_t	0.124*** (0.030)	0.097*** (0.032)	0.107*** (0.035)	0.080*** (0.021)	0.071*** (0.021)	0.079*** (0.022)
Log(REN KS)_{t-1}	0.662*** (0.169)	0.609*** (0.159)	0.649*** (0.157)			
Log(FF KS)_{t-1}				0.892*** (0.071)	0.878*** (0.073)	0.893*** (0.073)
$\text{Log (FF prices)}_{t-1}$		-1.294 (0.921)	-1.148 (0.985)		-1.393** (0.618)	-1.438** (0.638)
$\text{Log (REN market size)}_{t-1}$		0.278* (0.151)	0.292* (0.157)		-0.090 (0.269)	0.031 (0.286)
$\text{Log (FF market size)}_{t-1}$		-0.252 (0.273)	-0.222 (0.287)		-0.201 (0.376)	-0.342 (0.367)
presample	0.056 (0.048)	-0.008 (0.060)	-0.008 (0.063)	-0.216*** (0.050)	-0.253*** (0.071)	-0.237*** (0.071)
Constant	-2.902** (1.167)	-0.297 (1.938)	-0.852 (2.036)	-1.693*** (0.412)	1.307 (1.403)	1.368 (1.456)
Observations	2,326	2,136	1,995	5,086	5,063	4,811
Log Likelihood	-1170	-1095	-1003	-2585	-2577	-2448
Year FE	Yes	Yes	Yes	Yes	Yes	Yes
Number of firms	443	417	390	844	843	813

* $p \leq 0.1$, ** $p \leq 0.05$, *** $p \leq 0.01$. The dependent variable in every column is the number of patents in technology z per firm i and year t for the subsamples of REN firms and FF firms, respectively. Robust standard errors are clustered at the firm level. All specifications include year fixed effects. Fossil fuel price and market size variables are constructed by using firm-specific weights reflecting the firms' patent portfolio and designation countries as in Noailly and Smeets (2015).

1. Hence, in column (1) of Table 4, we consider the subsample of mature REN and FF firms (with at least 25 years of existence) and in column (2), we consider the subsample of large REN and FF firms (with more than the median of 200 employees). We find that the significant difference on the innovation-cash flow sensitivity still holds for the subsamples of mature and larger specialized firms, respectively. We find that the total interaction effect of ($CF_{t-1} * REN$ firms) is significant and positive. This is striking as this suggests that innovation activities of mature and large REN firms are significantly more sensitive to a shock in internal finance – and thus more susceptible to financing constraints – than similar mature and larger FF firms. This result tends to suggest that financing constraints are not a manifestation of the smaller size or lower maturity of REN companies, but more likely of other factors such as distinct technological and policy risks. Finally, in column (3), we find that our results are robust to a Poisson estimation model. In this case, the total interaction effect of ($CF_{t-1} * REN$ firms) remains significant and positive, albeit smaller.

6 Conclusions

This paper aimed to examine the role of firms' cash flows as a source of financing for energy innovation. Drawing on the result from the corporate finance literature that firms that are financially constrained tend to be more sensitive to shocks in the supply of internal finance, we investigated whether firms specializing in REN innovation exhibit a higher innovation-cash flow sensitivity - an indication of binding financial constraints - than firms specializing in FF innovation. Compared to FF innovation, REN innovation presents more risks for investors, due to the larger reliance on (uncertain) policy support and specific technological characteristics. Our study provides thus some first empirical support for the hypothesis that clean energy innovation may be particularly more difficult to finance than fossil-fuel based innovation, confirming qualitative evidence from the literature. Using count estimation techniques for a sample of European firms over the 1995-2009 period - a period of early development of REN technologies supported by market subsidies - we find that an extension of cash flows is positively associated with more patenting activities by REN firms and that this effect is significantly different for REN firms compared to FF firms, suggesting that firms specialized in REN technologies are more vulnerable to financing constraints than FF firms. The significant difference in innovation-cash flow

Table 4: Robustness results

	(1)	(2)	(3)
	Mature	Large	Poisson
CF _{t-1}	-0.285 (0.453)	-0.342 (0.406)	0.016 (0.165)
CF _{t-1} x REN firms	1.583*** (0.508)	1.509*** (0.476)	0.299 (0.201)
ΔCashholdings _{t-1}	0.106 (0.473)	-0.801 (0.529)	0.038 (0.211)
ΔCashholdings _{t-1} x REN firms	0.891 (1.158)	0.311 (0.534)	-0.184 (0.224)
RENfirms	0.291* (0.164)	0.388** (0.176)	0.650*** (0.177)
Dbt _{t-1}	-0.485 (0.383)	-0.461* (0.247)	-0.227 (0.193)
Stk _{t-1}	-2.654* (1.585)	0.639 (0.475)	-0.219 (0.608)
Log(Age) _t	-0.143 (0.126)	-0.225*** (0.057)	-0.218*** (0.064)
Log(Employees) _t	0.042 (0.026)	0.053 (0.036)	0.080*** (0.020)
Sales _{t-1}	-0.035 (0.065)	0.048 (0.056)	0.042 (0.037)
Log(KS) _{t-1}	0.888*** (0.089)	0.961*** (0.065)	0.991*** (0.054)
Log(FF prices) _{t-1}	-2.153*** (0.618)	-1.709** (0.751)	-1.230** (0.601)
Log(REN market size) _{t-1}	0.307** (0.153)	0.329* (0.183)	0.463*** (0.162)
Log(FF market size) _{t-1}	-0.019 (0.283)	0.156 (0.272)	-0.070 (0.223)
presample	-0.122 (0.171)	-0.097* (0.058)	-0.144* (0.074)
Constant	1.458 (1.333)	-0.076 (1.490)	-0.816 (1.136)
<u>Total interaction terms (Delta method)</u>			
CF * REN firms	0.365*** (0.102)	0.483*** (0.13)	0.089** (0.039)
CashHoldings * REN firms	0.216 (0.262)	0.008 (0.127)	-0.046 (0.041)
Observations	3,375	3,643	6,806
Log Likelihood	-1677	-2175	-3789
Number of firms	555	632	1203

* p<0.1, ** p<0.05, *** p<0.01. The dependent variable in every column is the number of patents per firm i and year t for the sample of specialized firms (REN and FF firms). Robust standard errors are clustered at the firm level. All specifications include year fixed effects. Fossil fuel price and market size variables are constructed by using firm-specific weights reflecting the firms' patent portfolio and designation countries as in Noailly and Smeets (2015).

sensitivity between REN and FF firms still holds if we restrict the samples to consider only large and mature firms. This suggests that the finding that REN firms are more financially constrained than FF firms is for the most part likely to be a manifestation of the environmental market failure (reliance on uncertain public support) and differences in technological risks, rather than explained by the lower maturity of the industry.

Our results shed light on how distinct risk-profiles between clean and dirty energy technologies may affect the financing of energy innovation and thereby drive the direction of technological change, as financiers will tend to support lower-risk technologies that are easier to finance. This has important implications for future energy transition policies as more innovation is still needed in advanced clean energy technologies, such as decentralized renewable energy, advanced biofuels or unproven solar technologies and as the pace of the energy transition will necessarily need to accelerate to meet the climate neutrality goal by 2050. Our analysis emphasizes that policies should not only aim at mobilizing finance to fill the investment gap for clean energy targets but also consider gradually decreasing, discouraging or even banning the financing of fossil-fuel innovation. In this respect, the announcement by the European Investment Bank to stop funding oil, gas and coal projects at the end of 2021 is a move in the good direction. Under the new policy, energy projects applying for the European Investment Bank funding will need to show that they can produce one kilowatt hour of energy while emitting less than 250 grams of carbon dioxide. In a similar way, it could be useful to reevaluate the portfolio of policy instruments for energy innovation, ranging from public grants and contracts, loans or guarantees, public-private equity partnerships, innovation prizes and tax credits (Olmos et al., 2012) to gradually remove financial support for fossil-fuel R&D. An additional implication is that financial institutions should be able to better assess and scrutinize clean energy projects. In this context, the process of developing a standardized Green Taxonomy to support the European Green New deal is a promising initiative.

As a first attempt to investigate the role of financing constraints for renewable versus fossil-fuel innovation, our analysis presents several limitations due to our small sample of firms. Future work could take advantage of larger datasets allowing more refined econometric techniques to provide a more thorough empirical investigation of how firms' financing sources - cash, debt and equity - affect firms' R&D investments in energy technologies. Several questions are left

for future research, such as for instance the role of the financial crisis, potential variation across specific REN technologies (e.g solar vs. wind or biomass), the role of large incumbent FF firms increasingly diversifying their patent portfolio to innovate also in REN technologies, or the importance of policy risks versus technological risks in explaining financing constraints.

References

- Abraham, J. 2011. ‘Evolving sociological analyses of pharmaceuticalisation: a response to Williams, Martin and Gabe’. *Sociology of Health and Illness* 33(5), 726–728.
- Acemoglu, Daron, Aghion, Philippe, Bursztyn, Leonardo and Hemous, David. 2012. ‘The environment and directed technical change’. *The American Economic Review* 102(1), 131–166.
- Aghion, P., Dechezlepretre, A., Hemous, D., Martin, R and van Reenen, J. 2016. ‘Carbon taxes, path dependency and directed technical change: Evidence from the auto industry’. *Journal of Political Economy* 124(1), 1–51.
- Ai, C. and Norton, E. C. 2003. ‘Interaction terms in logit and probit models’. *Economic Letters* 80(1), 123–129.
- Alti, Aydoĝan. 2003. ‘How sensitive is investment to cash flow when financing is frictionless?’. *Journal of Finance* 58(2), 707–722.
- Blundell, Richard, Griffith, Rachel and Windmeijer, Frank. 2002. ‘Individual effects and dynamics in count data models’. *Journal of econometrics* 108(1), 113–131.
- Brown, J. R., Martinsson, G. and Petersen, B. C. 2012. ‘Do financing constraints matter for R&D?’. *European Economic Review* 56, 1512–1529.
- Brown, J. R. and Petersen, B. C. 2009. ‘Why has the investment-cash flow sensitivity declined so sharply? Rising R&D and equity market developments’. *Journal of Banking and Finance* 33(5), 971–984.
- Brown, J. R. and Petersen, B. C. 2011. ‘Cash holdings and R&D smoothing’. *Journal of Corporate Finance* 17(3), 694–709.

- Cameron, A. Colin and Trivedi, Pravin. 2013. *Regression Analysis of Count Data*. 2 edn. Cambridge University Press. Cambridge.
- Conti, Annamaria, Thursby, Jerry and Thursby, Marie. 2013. ‘Patents as signals for startup financing’. *The Journal of Industrial Economics* 61(3), 592–622.
- Criscuolo, C. and Menon, C. 2015. ‘Environmental policies and risk finance in the green sector: Cross-country evidence’. *Energy Policy* 83, 38–56.
- Donovan, C. W. 2015. *Renewable energy finance: powering the future*. World Scientific.
- Erickson, Timothy and Whited, Toni M. 2000. ‘Measurement error and the relationship between investment and q ’. *Journal of Political Economy* 108(5), 1027–1057.
- European Commission. 2020. ‘Proposal for a REGULATION of the EUROPEAN PARLIAMENT and of the COUNCIL Establishing the Framework for Achieving Climate Neutrality and Amending Regulation (EU) 2018/1999 (European Climate Law)’. Brussels.
- FS, UNEP and BNEF. 2016. ‘Global trends in renewable energy investment 2016’. Report Frankfurt School- UNEP Centre/Bloomberg New Energy Finance.
- Gaddy, B., Sivaram, V. and O’Sullivan, F. 2016. ‘Venture Capital and Cleantech: The Wrong Model for Clean Energy Innovation’. Report MIT Energy Initiative.
- Ghosh, S. and Nanda. 2010. ‘Venture capital investment in the clean energy sector’. Working Paper No. 11-020, Harvard Business School.
- Griliches, Z. 1990. ‘Patent Statistics as Economic Indicators: A Survey’. *Journal of Economic Literature* 28(4), 1661–1707.
- Hall, B.H. and Lerner, J. 2010. *Handbook of the Economics of Innovation*. Vol. 1. North Holland. chapter The Financing of R&D and Innovation, pp. 609–639.
- Hausman, Jerry A, Hall, Bronwyn H and Griliches, Zvi. 1984. Econometric models for count data with an application to the patents-R&D relationship. Technical report. National Bureau of Economic Research.

- Himmelberg, C. P. and Petersen, B. C. 1994. ‘R&D and internal finance: A panel study of small firms in high-tech industries’. *Review of Economics and Statistics* 76(1), 38–51.
- Howell, S. T. 2017. ‘Financing Innovation: Evidence from R&D Grants’. *American Economic Review* 107(4), 1136–64.
- IEA. 2015. *World Energy Outlook*. IEA. Paris, France.
- IEA. 2017. Tracking clean energy progress 2017. Technical report. IEA. Paris.
- Johnstone, N., Hascic, I. and Popp, D. 2010. ‘Renewable Energy Policies and Technological Innovation: Evidence Based on Patent Counts’. *Environmental and Resource Economics* 45(1), 133–155.
- Kalemli-Ozcan, S., B., Sorensen, C., Villegas-Sanchez, V., Volosovych and S., Yesiltas. 2015. How to Construct Nationally Representative Firm Level data from the ORBIS Global Database. NBER Working Paper.
- Lanzi, E., Verdolini, E. and Hascic, I. 2011. ‘Efficiency improving fossil fuel technologies for electricity generation: Data selection and trends’. *Energy Policy* 39(11), 7000–7014.
- Loof, H. and Nabavi, P. 2016. ‘Innovation and credit constraints: evidence from Swedish exporting firms’. *Economics of Innovation and New Technology* 25(3), 269–282.
- McCollum, David L, Zhou, Wenji, Bertram, Christoph, De Boer, Harmen-Sytze, Bosetti, Valentina, Busch, Sebastian, Després, Jacques, Drouet, Laurent, Emmerling, Johannes, Fay, Marianne et al. 2018. ‘Energy investment needs for fulfilling the Paris Agreement and achieving the Sustainable Development Goals’. *Nature Energy* 3(7), 589–599.
- Mulkay, Benoit, Hall, Bronwyn H and Mairesse, Jacques. 2001. Firm level investment and R&D in France and the United States: A comparison. *in* ‘Investing today for the world of tomorrow’. Springer. pp. 229–273.
- Nanda, R., K. Younge and Fleming, L. 2015. *The Changing Frontier: Rethinking Science and Innovation Policy*. University of Chicago Press. chapter Innovation and Entrepreneurship in Renewable Energy, p. 199–232.

- Nelson, D. and Shrimali, G. 2014. 'Finance mechanisms for lowering the cost of renewable energy in rapidly developing countries'. *Report Climate Policy Initiative* .
- Noailly, J. and Smeets, R. 2015. 'Directing technical change from fossil-fuel to renewable energy innovation: An application using firm-level data'. *Journal of Environmental Economics and Management* 72(C), 15–37.
- Olmos, Luis, Ruester, Sophia and Liong, Siok-Jen. 2012. 'On the selection of financing instruments to push the development of new technologies: Application to clean energy technologies'. *Energy Policy* 43, 252–266.
- Papies, Dominik, Ebbes, Peter and Van Heerde, Harald J. 2017. Addressing Endogeneity in Marketing Models. *in* Peter S. H. Leeflang, Jaap E. Wieringa, Tammo H.A Bijmolt and Koen H. Pauwels., eds, 'Advanced Methods for Modeling Markets'. Springer International Publishing. Cham. pp. 581–627. Series Title: International Series in Quantitative Marketing.
- Polzin, Friedemann and Sanders, Mark. 2020. 'How to finance the transition to low-carbon energy in Europe?'. *Energy Policy* 147, 111–863.
- Popp, D. 2002. 'Induced innovation and energy prices'. *American Economic Review* 92(1), 160–180.
- Wooldridge, Jeffrey M. 2015. 'Control function methods in applied econometrics'. *Journal of Human Resources* 50(2), 420–445.

Appendix

6.1 Delta method for computing interaction terms

Our baseline equation is as follows:

$$\begin{aligned}
E(PAT_{it}/X_{it}, \nu_i, \omega t) = & \exp(\beta_1 CashFlows_{it-1} + \beta_2 \Delta CashHold_{z,it-1} \\
& + \beta_{11} CashFlows_{it-1} * RENfirms \\
& + \beta_{22} \Delta CashHold_{it-1} * RENfirms \\
& + \beta_F RENfirms + \beta_3 EXT_{it-1} \\
& + \beta_4 STOCKP_{it} + \beta_5 X_{it} + \nu_i + \omega t + \epsilon_{z,it})
\end{aligned} \tag{3}$$

According to the Delta method (Ai and Norton, 2003), the total interaction term on ($CashFlows_{z,it-1} * RENfirms$) is computed as follows:

$$\begin{aligned}
\frac{\delta^2 E(PAT_{it}/X_{it}, \nu_i, \omega t)}{\delta CashFlows_{z,it-1} \delta RENfirms} = & [(\beta_1 + \beta_{11} CashFlows_{it-1} * RENfirms) \\
& * (\beta_F + \beta_{11} RENfirms) + \beta_{11}] E(PAT_{it}/X_{it}, \nu_i, \omega t)
\end{aligned} \tag{4}$$

6.2 First-stage control function approach

6.3 Variables definitions

For a detailed description of the variable construction we refer to Noailly and Smeets (2015).

The fossil-fuel price faced by firm i at time t is computed as:

$$\begin{aligned}
p_{it} = & \sum_c w_{ic} \times p_{ct} \\
\text{s.t. } p_{ct} = & \sum_{f=\text{oil,coal,gas}} \frac{M_{fc}}{M_{FFc}} \times p_{fct}
\end{aligned} \tag{5}$$

where p_{ct} is the sum of (log) fossil-fuel prices p_{fct} (oil, coal and gas) in country c at time t , weighted by the respective average market shares of each fossil fuel type in that country. This price is then multiplied by the weight $w_{ic} = \frac{P_{it} \times M_{FFic}}{\sum P_{it} M_{FFic}}$, where P_{ic} is the total number of patents filed by firm i in designation country c and M_{FFc} is the country's FF average market size.²⁴

²⁴All our weights are fixed, i.e. we compute total patent counts P_{ic} and average market sizes M_{FFc} over the

Table 5: First-stage - Control function estimations

Dependent variable	CF _{t-1} (1)	CF _{t-1} (2)	ΔCashholdings _{t-1} (3)	ΔCashholdings _{t-1} (4)
CF _{t-3,t-4}	0.534*** (0.113)			
CF _{t-2,t-3}		0.818*** (0.045)		
ΔCashholdings _{t-3,t-4}			-0.026 (0.056)	
ΔCashholdings _{t-2,t-3}				-0.093 (0.081)
CF _{t-1}			0.204* (0.112)	0.200* (0.112)
ΔCashholdings _{t-1}	0.202*** (0.019)	0.159*** (0.023)		
Dbt _{t-1}	-0.005 (0.013)	-0.006 (0.011)	0.131*** (0.030)	0.192*** (0.069)
Stk _{t-1}	-0.128** (0.064)	-0.010 (0.024)	0.929* (0.545)	0.944* (0.535)
Log(Age) _t	-0.000 (0.002)	-0.002 (0.002)	-0.001 (0.003)	0.000 (0.003)
Log(Employees) _t	0.004*** (0.001)	0.003*** (0.001)	0.001 (0.003)	0.002 (0.003)
Sales _{t-1}	0.019*** (0.004)	0.017*** (0.003)	0.071* (0.043)	0.085* (0.051)
Log(KS) _{t-1}	-0.005* (0.003)	-0.003 (0.003)	0.008** (0.004)	0.010** (0.004)
Log(FF prices) _{t-1}	-0.001 (0.026)	0.013 (0.023)	0.114 (0.091)	0.135 (0.093)
Log(REN market size) _{t-1}	-0.009*** (0.003)	-0.004 (0.003)	0.005 (0.008)	0.008 (0.008)
Log(FF market size) _{t-1}	0.035** (0.015)	0.026** (0.013)	-0.025 (0.022)	-0.021 (0.018)
presample	0.001 (0.001)	0.001 (0.001)	0.002 (0.002)	0.003 (0.002)
Constant	-0.040 (0.042)	-0.074** (0.035)		-0.074** (0.035)
Observations	5,866	6,726	5,966	4,989
R-squared	0.245	0.326	0.291	0.320

$p \leq 0.1$, ** $p \leq 0.05$, *** $p \leq 0.01$. Robust standard errors are clustered at the firm level. Fossil fuel price and market size variables are constructed by using firm-specific weights reflecting the firms' patent portfolio and designation countries as in Noailly and Smeets (2015).

Table 6: Construction and sources of variables

Variable	Construction	Data source	Time-period
Renewable (REN) patents	Count of patents in wind, solar, hydro, marine, biomass, geothermal, and waste energy technologies	Orbis-EPO (PATSTAT)	1995-2009
Fossil fuel (FF) patents	Count of patents in fuel gases by carbureting air, steam engine plants, gas turbine plants, hot-gas or combustion-product positive displacement engine, steam generation, combustion apparatus, furnaces, and improved compressed-ignition engines technologies	Orbis-EPO (PATSTAT)	1995-2009
Stock issues	$\frac{Capital_t - Capital_{t-1}}{TotalAssets_{t-1}}$	Orbis	1995-2009
Long-term debt	$\frac{LongTermDebt_t - LongTermDebt_{t-1}}{TotalAssets_{t-1}}$	Orbis	1995-2009
Cash flow	$\frac{CashFlow_t}{TotalAssets_{t-1}}$	Orbis	1995-2009
Sales	$\frac{Sales_t}{TotalAssets_{t-1}}$	Orbis	1995-2009
Δ CashHolding	$\frac{CashEquivalents_t - CashEquivalents_{t-1}}{TotalAssets_{t-1}}$	Orbis	1995-2009
Log employees	Log(Employees+1)	Orbis	1995-2009
Log age	Log(Year-Date of incorporation+ 1)	Orbis	
Fossil fuel (FF) price	see below - Noailly and Smeets (2015)	IEA, PATSTAT, INPADOC	1995-2009
REN and FF market size	see below - Noailly and Smeets (2015)	IEA, PATSTAT, INPADOC	1995-2009
REN and FF knowledge stock	$(1 - \delta)K_{it-1} + P_{it}$	Orbis, PATSTAT	1995-2009

As with prices in (5), we construct fixed firm-specific designation country weights w_{ik} to compute firm-level FF and REN market sizes. However, we now also introduce fixed firm-specific technology weights w_{is} to account for the fact that e.g. a firm innovating mainly in solar power will be mostly concerned with the market size for solar energy. Hence we compute:

$$M_{it} = \sum_c \sum_s w_{isc} M_{sct} \quad (6)$$

with $w_{isc} = \frac{P_{isc}}{\sum_s \sum_c P_{isc}}$, where P_{isc} is the number of patents of firm i in technology s in country c and M_{sct} is the market size of technology s in country c .

To compute FF technology weights w_{isc} we use a correspondence between the FF technology whole sample period. If changes in FF prices affect the country mix of the patent portfolio or the size of the FF market, not fixing the weights might feed back into the prices, causing potential endogeneity.

ical areas and oil, gas or coal fuels as provided in Lanzi et al. (2011). For instance, technologies in the field of production of fuel gases by carburetting air are assigned to the market size of electricity output from coal. For those FF innovations without such a correspondence, we assign the weighted average market size of all three fuel sources. Finally, we also compute firm-specific REN market sizes for firms innovating only in FF technologies. To do so, we assign country-level market size averaged across all REN technologies, also using the relevant country-weights (w_{ik}). We proceed in a similar manner to assign FF market sizes to firms that innovate only in REN technologies.

Knowledge stocks are computed using the perpetual inventory method as $KS_{it} = (1 - \delta)KS_{t-1} + P_{it}$, where δ is the depreciation rate and P_t is the total number of patents filed by firm i at time t .

6.4 Methodology and data cleaning of the Orbis dataset

To construct the firm-level financial variables, we follow the following steps for data cleaning as in Kalemli-Ozcan et al. (2015).

1. We check the consistency of accounting identities (ratio should not be larger than 10
 - $(\text{fixedassets-tangiblefixedassets-intangiblefixedassets-otherfixedassets})/\text{fixedassets}$
 - $(\text{totalassets} - \text{fixedassets-currentassets})/\text{totalassets}$
 - $(\text{noncurrentliabilities} - \text{longtermdebt} - \text{othernoncurrentliabilities})/\text{noncurrentliabilities}$
 - $(\text{currentliabilities} - \text{loans} - \text{creditors} - \text{othercurrentliabilities})/\text{currentliabilities}$
 - $(\text{totalsharefundsliab-loans})/\text{totalsharefundsliab}$
 - $(\text{totalsharefundsliab-longtermdebt})/\text{totalsharefundsliab}$
2. We drop the entire company (all years) if total assets is negative in any year.
3. We drop the entire company (all years) if sales is negative in any year.
4. We drop the entire company (all years) if tangible fixed assets (such as buildings, machinery, etc) is negative in any year

5. For some firms, there are some inconsistencies in the units of financial variables (as noted by Kalemli-Ozcan on p.29). The moment of switch in units coincides with an “unreasonable” move of total assets, often clustered around the year 2000. To solve for this, we focus on firms with total assets above 1 million USD.
6. We also winsorize all financial variables by trimming the data at 1

Table 7: Summary Statistics for ‘mixed firms’ patenting in both REN and FF (N

	Mixed firms					
	Mean	SD	50 th perc.	75 th perc.	Min	Max
CF _{t-1}	0.110	0.219	0.091	0.140	-0.565	4.529
CashHolding _{t-1}	0.120	0.379	0.047	0.129	0.000	6.172
NetWorkCapital _{t-1}	0.022	0.1.9	0.006	0.053	-0.764	0.980
Dbt _{t-1}	0.061	0.0802	0.000	0.024	-0.794	17.84
Stk _{t-1}	0.018	0.168	0.001	0.005	0.000	3.727
Sales _t	1.345	3.444	1.03	1.48	0.002	76.72
Total Assets _t	25,874	51,789	4,279	26,715	18.14	379,679
Age _t	51	38	43	78	2	149
Employees _t	10,873	24,874	1,356	9,457	0	196,880
REN patents _t	0.297	0.791	0	0	0	7
FF patents _t	1.513	5.479	0	1	0	57
All patents _t	44.32	136.1	8	38.5	0	1,518

Average over firm-year observations, 1995-2009: Number of firm-year observations: Mixed firms N=528 (90 firms).

7 Summary statistics on mixed firms